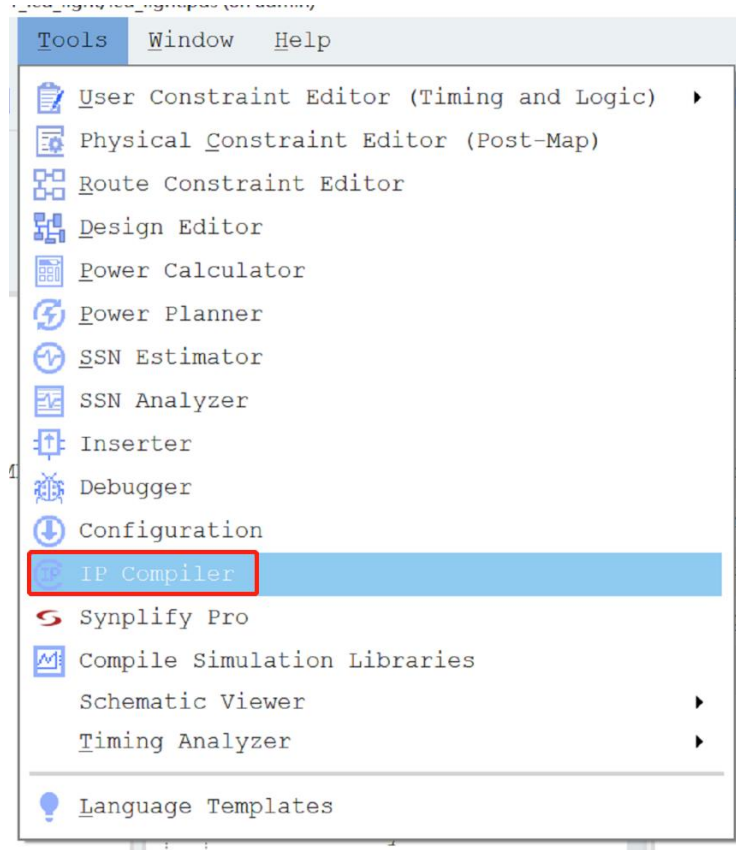


## IP核安装与查看用户指南

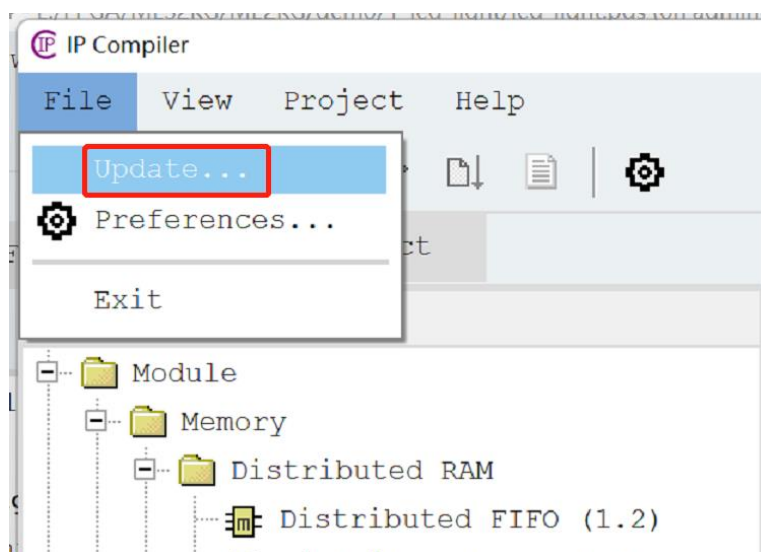
### 1. 安装 IP 核

(1) 打开工程，点击菜单栏中【tools】下的【IP Compiler】。

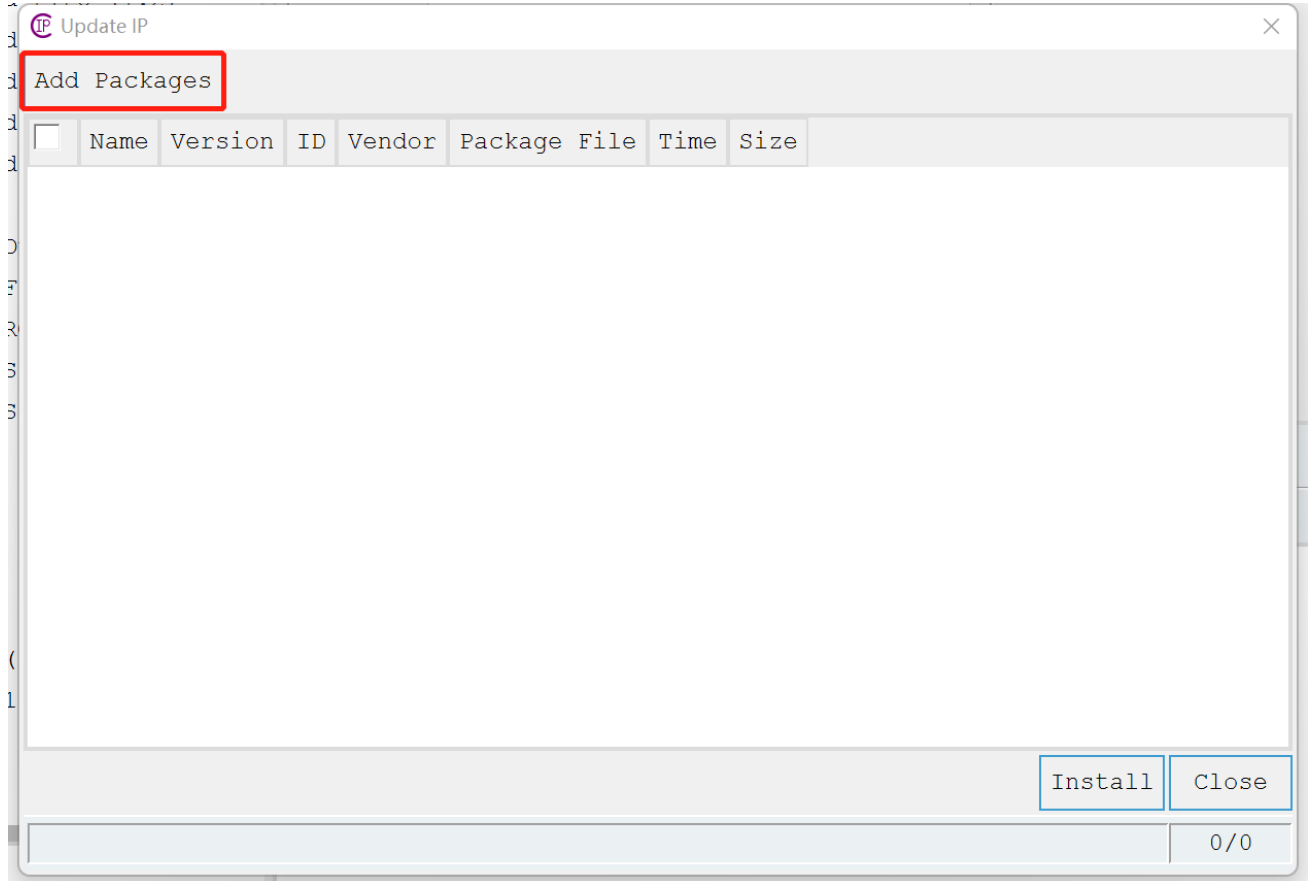


IP Compiler

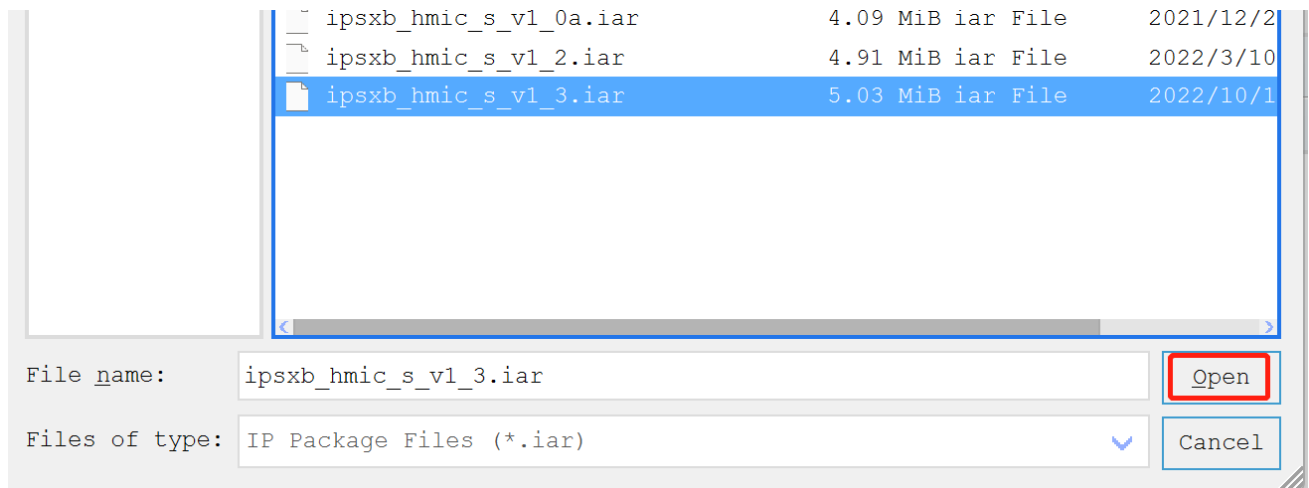
(2) 在弹出的 IP Compiler 界面中，选择【File】下的【Update】。



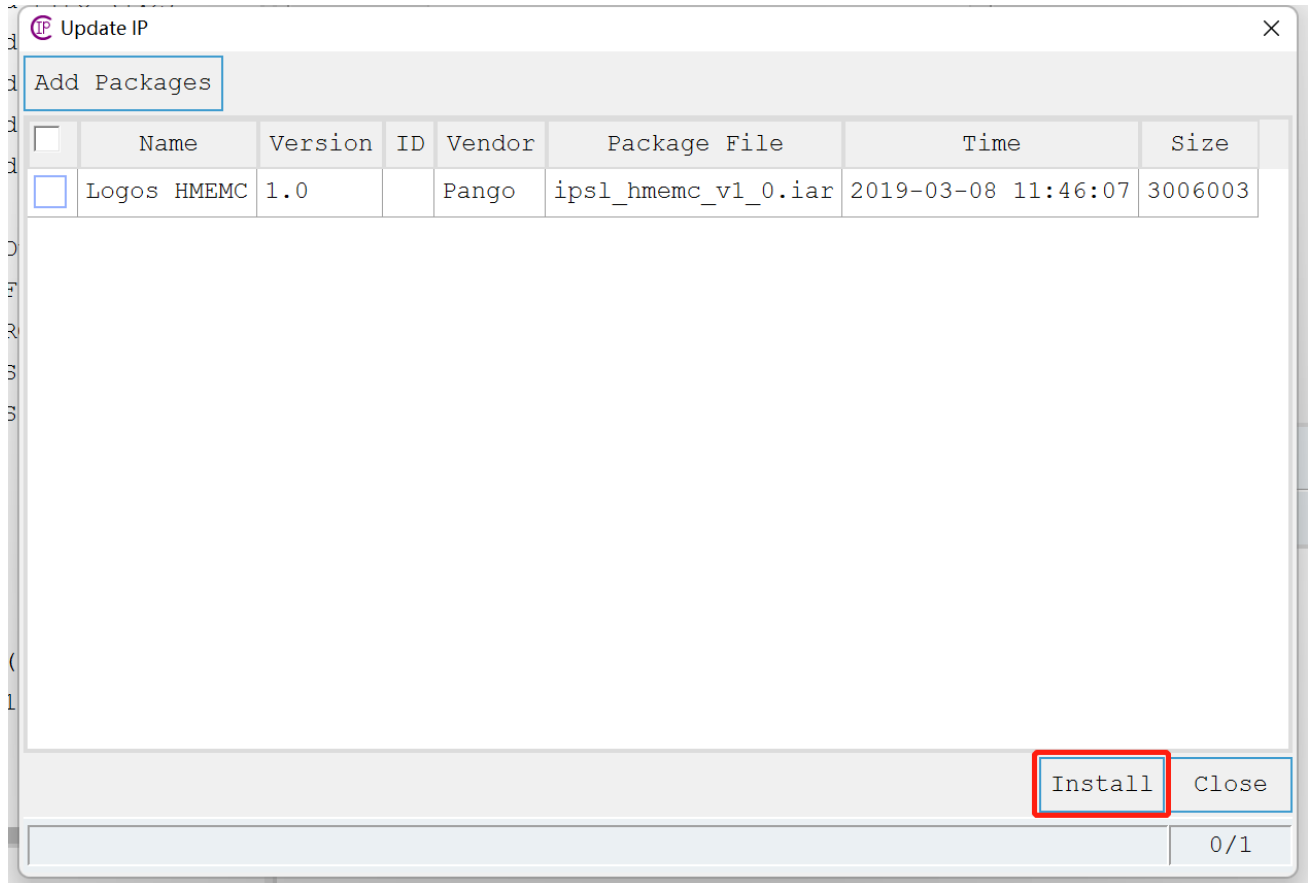
3. 点击弹出 Update IP 界面中的【Add Packages】，添加 IP 核，点击 Install。



## Add Packages



## 选择 IP 核



点击 Install

## 2. 查看 IP 用户指南

选择要查看的 IP，点击【View Datasheet】

The screenshot displays the IP Compiler - DDR3 Interface (1.1) application. The interface is divided into several sections:

- Top Menu and Toolbar:** Includes 'File', 'View', 'Project', and 'Help' menus. The toolbar contains icons for opening, saving, and other file operations. A red arrow labeled '2' points to the 'Project' tab in the toolbar.
- Left Panel (IP Catalog):** A tree view showing various IP blocks categorized under 'Distributed RAM', 'DRAM', 'Multiplier', 'PLL', 'System', 'DDR', 'Hard', and 'Tools'. The 'DDR3 Interface (1.1)' block is highlighted, with a red arrow labeled '1' pointing to it.
- Right Panel (Configuration):** Contains fields for 'Pathname' (C:\Users\w\Desktop\22G\_DDR\demo\ipcore\), 'Instance Name', and 'Name' (DDR3 Interface). It also includes a 'Part (PDS settings)' section with dropdowns for 'Family' (Logos), 'Device' (PGL22G), 'Package' (MBG324), and 'Speed Grade' (-6).
- Bottom Panel (Message):** A message window showing the status of the compilation process: 'Initializing ...', 'Loaded 21 devices.', 'Loaded 86 IPs. (10)', and 'Imported 1 IP instance.'.

The status bar at the bottom indicates 'Ready' and 'SYN'.